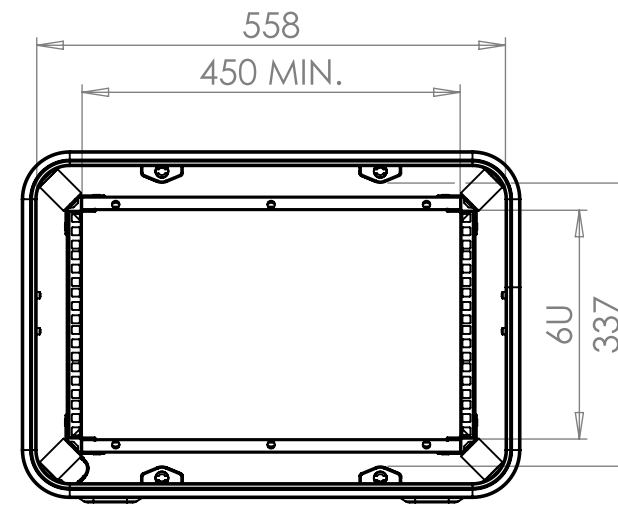
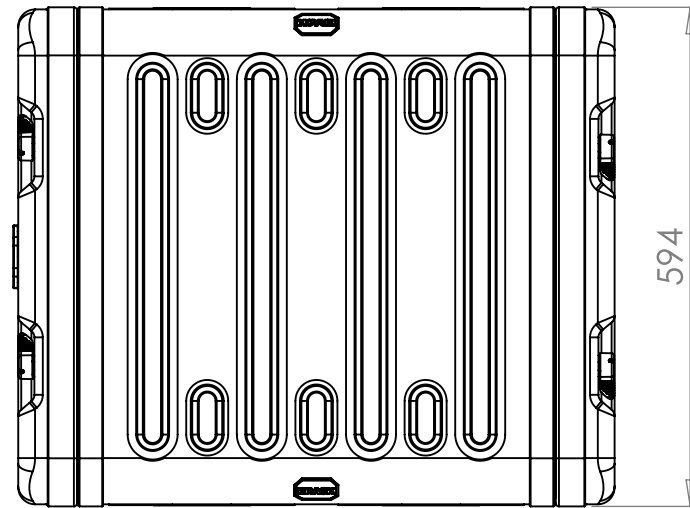
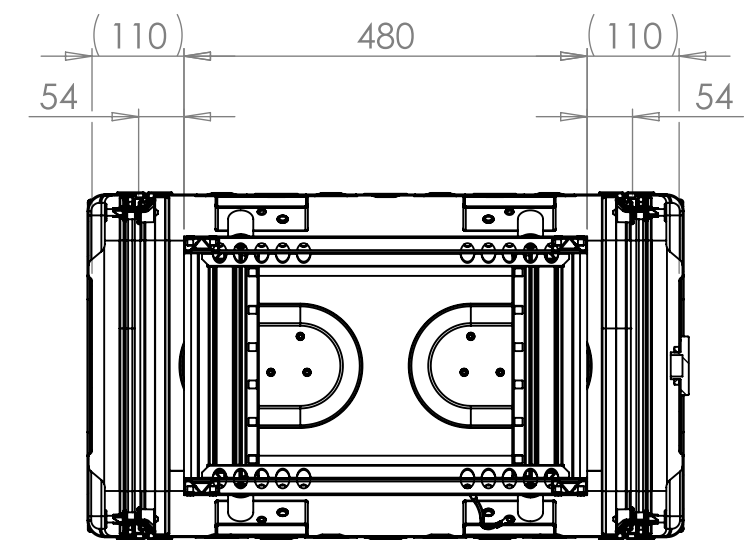
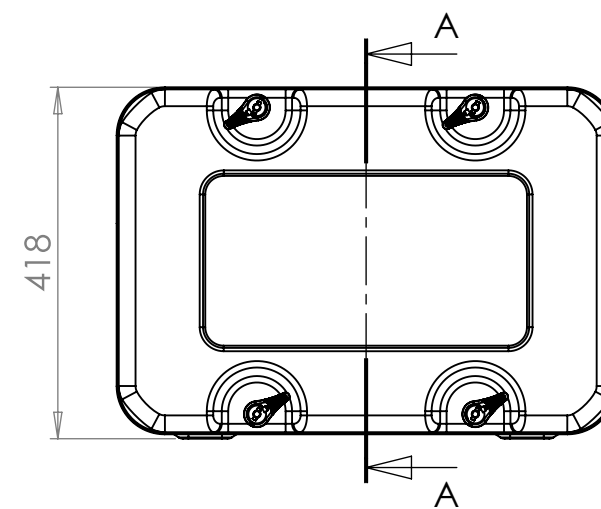
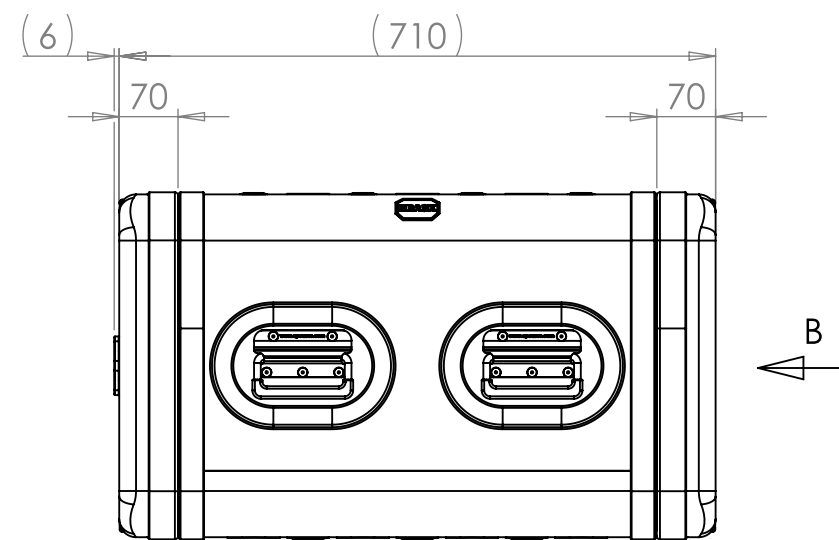
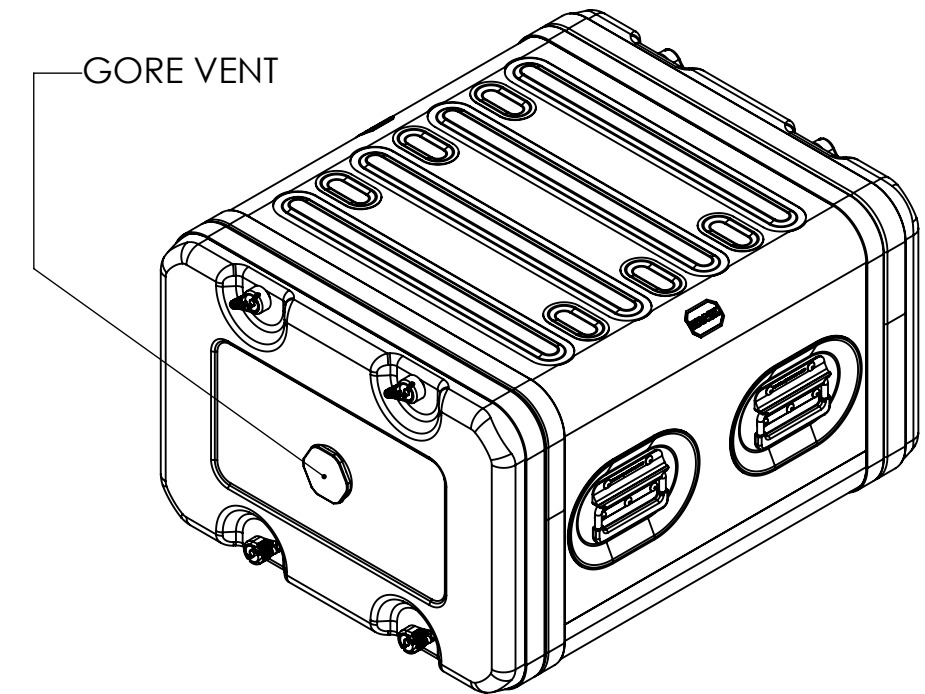


FOR REFERENCE ONLY




VIEW B
SHOWING CASE WITH LIDS REMOVED



SECTION A-A
SHOWING CHASSIS DETAIL

NOTES:

1. APPROXIMATE WEIGHT: 15.4KG

Title ERV3 Case 6U 480mm Body/Lids		Material Aluminium		Finish Powdercoat Fine Texture (Other finishes available upon request)		Date	Drawn By JB	Revision /	Project ERV3	CP Cases Ltd.
Drg. No. RRV3-0648-0707		External Dimensions Height Width Length/ Depth		Internal Dimensions Height Width Length/ Depth		If in doubt ASK		Sheet No. 1 Of 1	Nato Stock No. -	
						Dimensions In Millimeters. Do Not Scale. Third Angle Projection.			Tolerance Unless Stated Otherwise. Moulding Tolerance +/- (1%+1mm). Sheet Metal Tolerance +/-0.5mm.	
Copyright CP Cases Ltd. This drawing is the property of CP Cases Ltd & the information on it is confidential. It is not to be used for any other purpose without the prior written consent of CP Cases Ltd.										