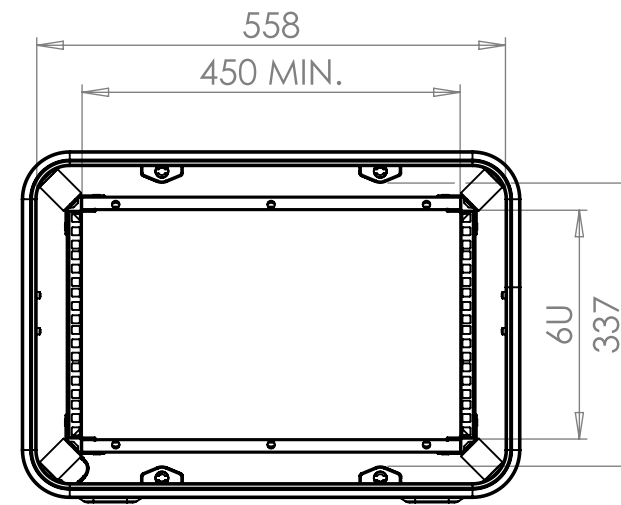
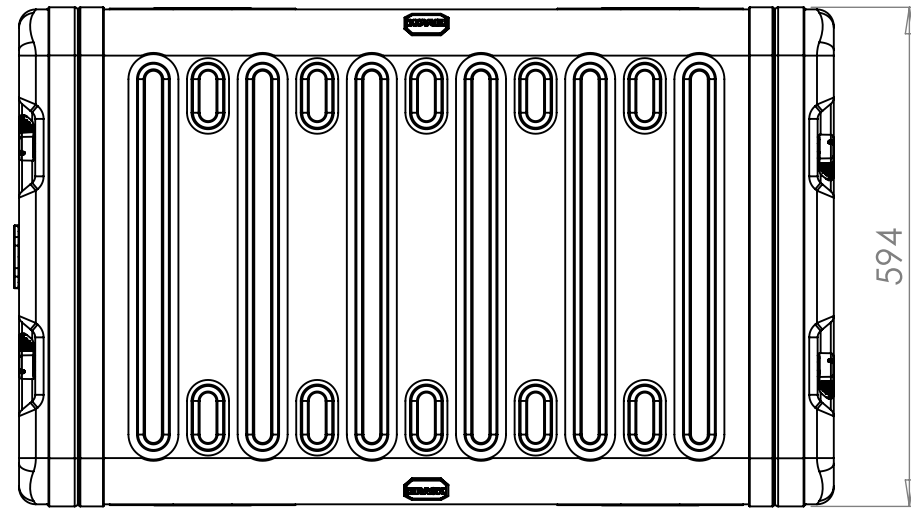
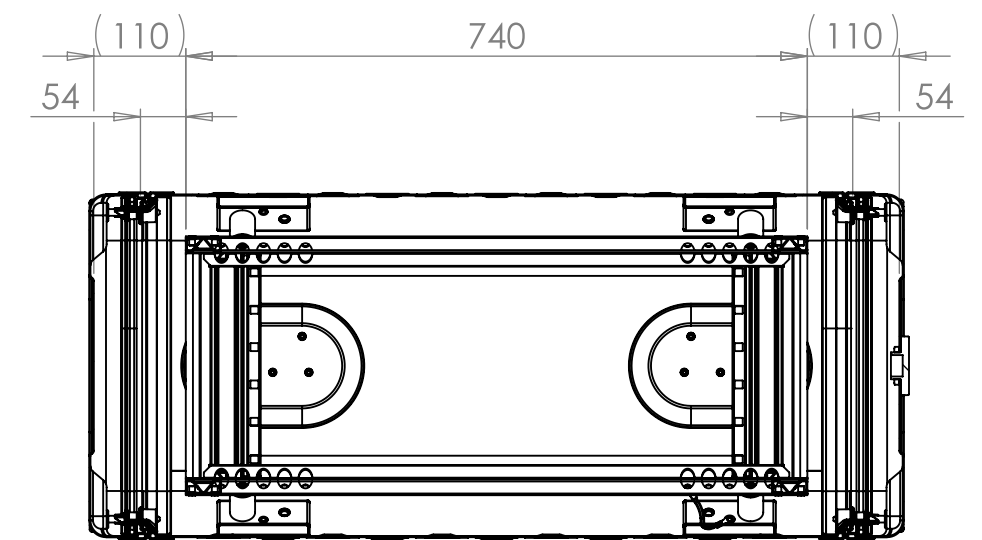
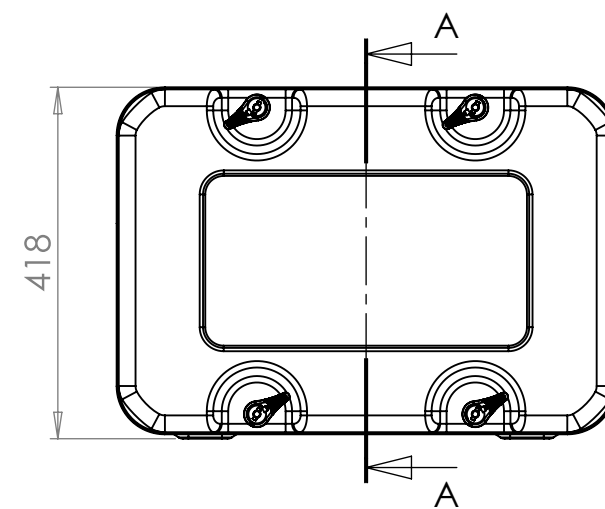
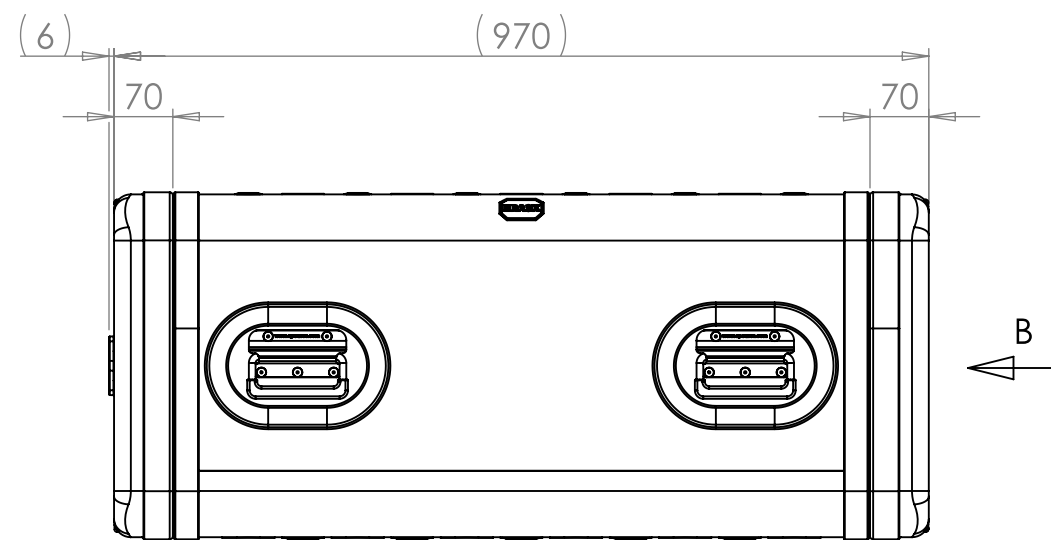
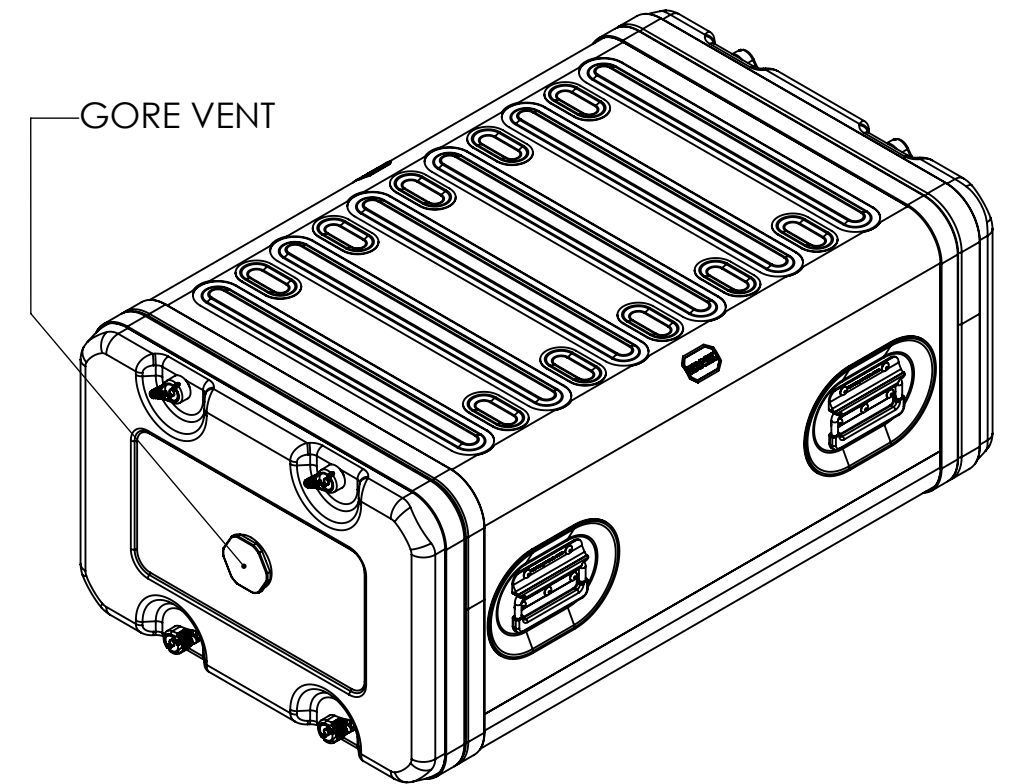


FOR REFERENCE ONLY




VIEW B
SHOWING CASE WITH LIDS REMOVED



SECTION A-A
SHOWING CHASSIS DETAIL

NOTES:

- NOTES:
1. APPROXIMATE WEIGHT: 18.1KG

Title ERV3 Case 6U 740mm Body/Lids		Material Aluminium		Finish Powdercoat Fine Texture (Other finishes available upon request)		Date	Drawn By JB	Revision /	Project ERV3	CP Cases Ltd.	
Drg. No. RRV3-0674-0707		External Dimensions Height Width Length/ Depth		Internal Dimensions Height Width Length/ Depth		If in doubt ASK		Sheet No. 1 Of 1	Nato Stock No. -	Copyright CP Cases Ltd. This drawing is the property of CP Cases Ltd & the information on it is confidential. It is not to be used for any other purpose without the prior written consent of CP Cases Ltd.	
						Dimensions In Millimeters. Do Not Scale. Third Angle Projection. 		Tolerance Unless Stated Otherwise. Moulding Tolerance +/- (1%+1mm). Sheet Metal Tolerance +/-0.5mm.			