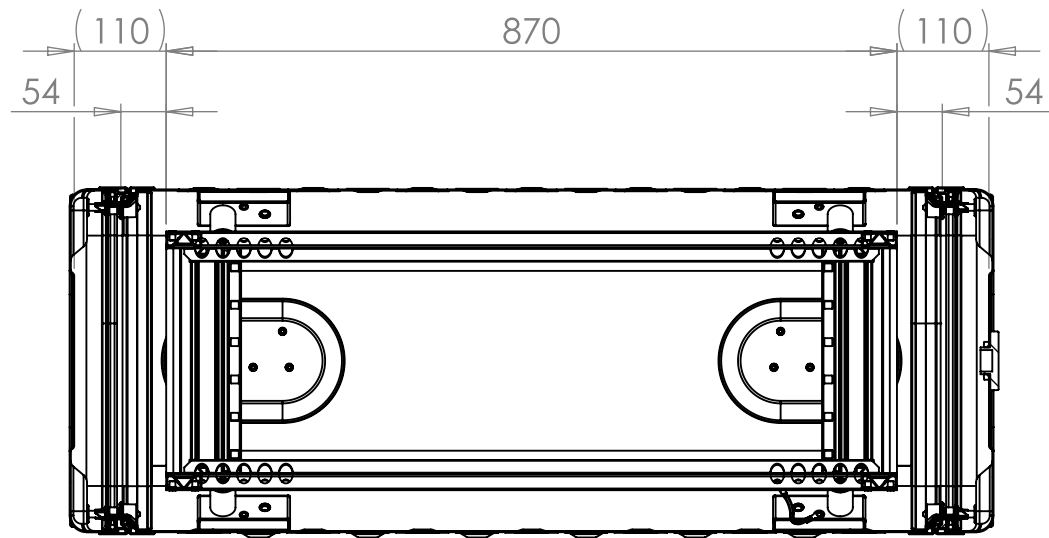
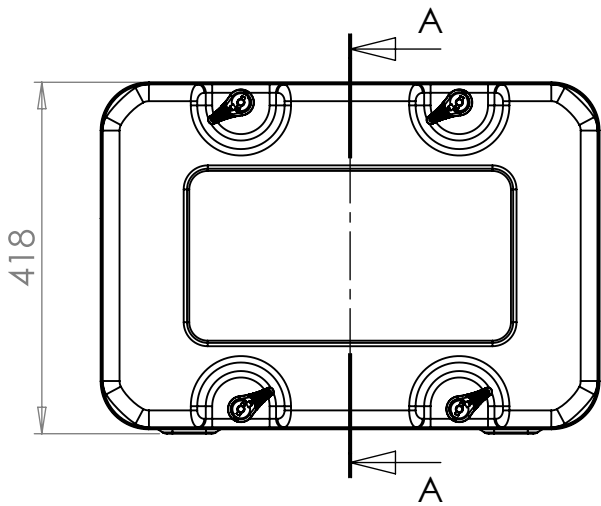
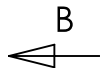
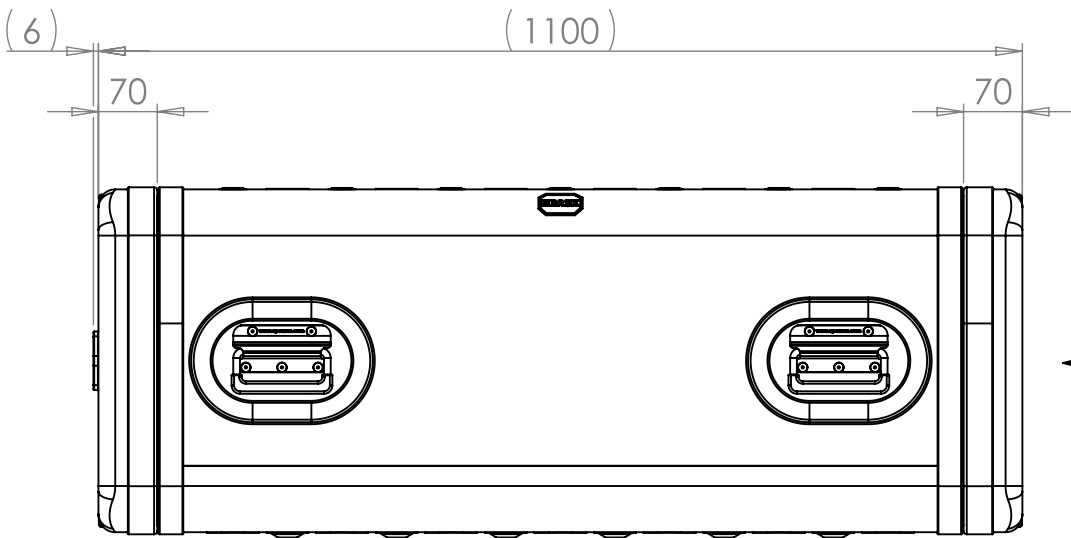
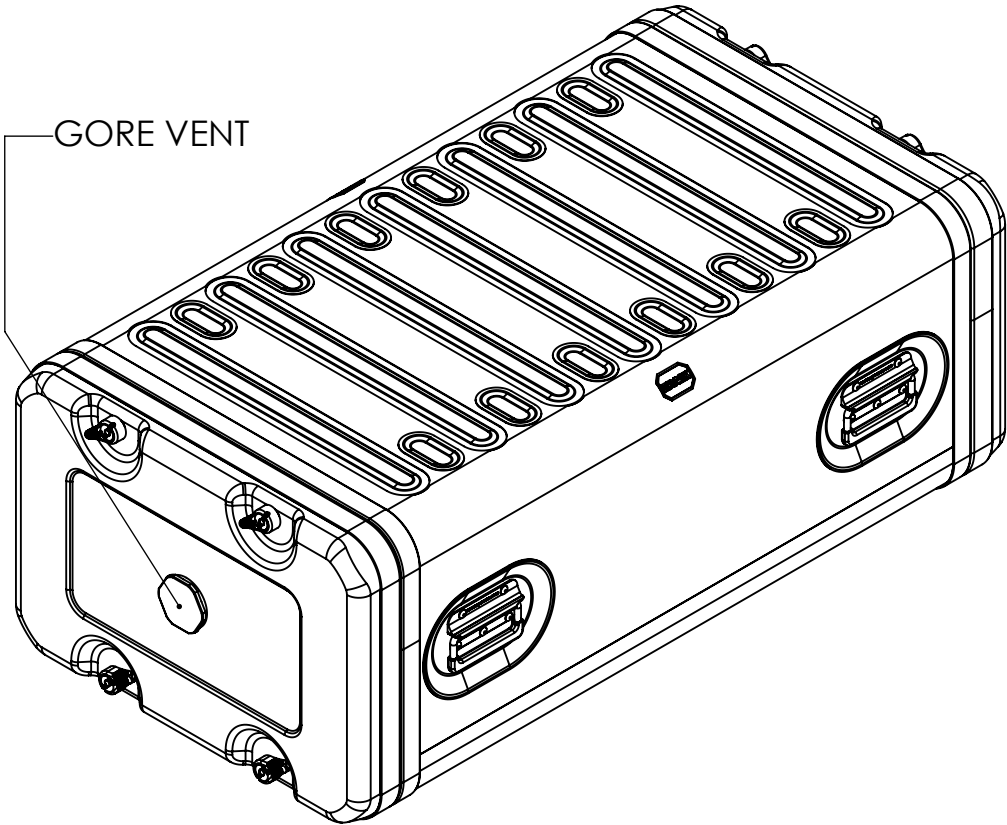


VIEW B
SHOWING CASE WITH LIDS REMOVED



SECTION A-A
SHOWING CHASSIS DETAIL

NOTES:
1. APPROXIMATE WEIGHT: 19.4KG

Title ERV3 Case 6U 870mm Body/Lids	Material Aluminium	Finish Powdercoat Fine Texture (Other finishes available upon request)	Date 05/06/2020	Drawn By JB	Revision /	Project ERV3	CP Cases Ltd.
			If in doubt ASK		Sheet No. 1 Of 1	Nato Stock No. -	
					Dimensions In Millimeters. Do Not Scale. Third Angle Projection.		
Drg. No. RRV3-0687-0707	External Dimensions Height Width Length/ Depth	Internal Dimensions Height Width Length/ Depth					Copyright CP Cases Ltd. This drawing is the property of CP Cases Ltd & the information on it is confidential. It is not to be used for any other purpose without the prior written consent of CP Cases Ltd.